



## Anti-Hu PD-L1 (AKYP0103)-BX067 for PhenoCode Signature

CATALOG # S6501011

| Components   |  |              |                                    |  |
|--|--|--------------|------------------------------------|--|
| 240228 Anti-Hu PD-L1 (AKYP0103)-BX067<br>PCSD067 HRP-HX067 PhenoCode™ Signature Detector |  |              |                                    |  |
| Quantity   |  |              |                                    |  |
| Up to 20 Slides  |  |              |                                    |  |
| Storage & Stability  |  |              |                                    |  |
| Component #  | Component Name                         | Storage Temp | Storage Notes                      | Stability  |
| 240228   | Anti-Hu PD-L1 (AKYP0103)-BX067         | 4°C          | Do Not Freeze                      | Refer to expiration date on antibody tube label                            |
| PCSD067  | HRP-HX067 PhenoCode Signature Detector | -20°C        | Do Not Exceed 5 Freeze-Thaw Cycles | Refer to expiration date on HRP-HX PhenoCode Signature Detector tube label |

| Target & Clone Information |  |
|----------------------------|--|
| Synonym(s)                 | CD274, B7 homolog1   |
| Cell Type Expression       | Activated T cells and B cells, Dendritic cells, Keratinocytes, Monocytes |
| Expected Localization      | Membrane   |
| Reactivity                 | Human  |
| Host Species/Isotype       | Rabbit IgG   |
| Clonality                  | Monoclonal   |

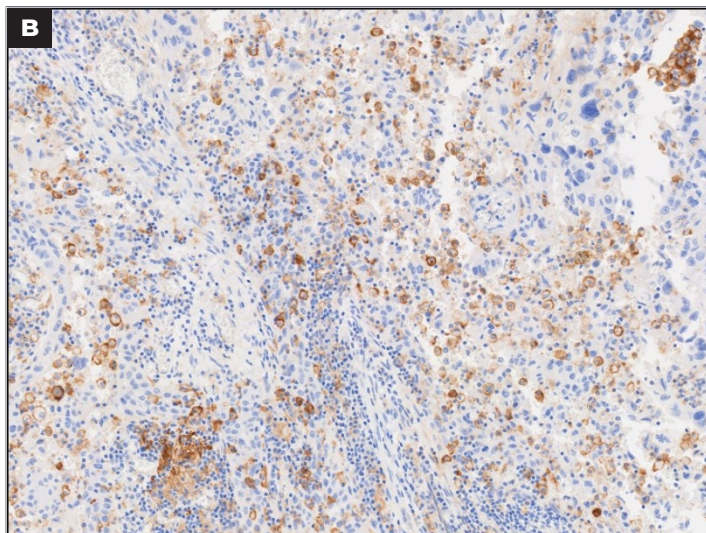
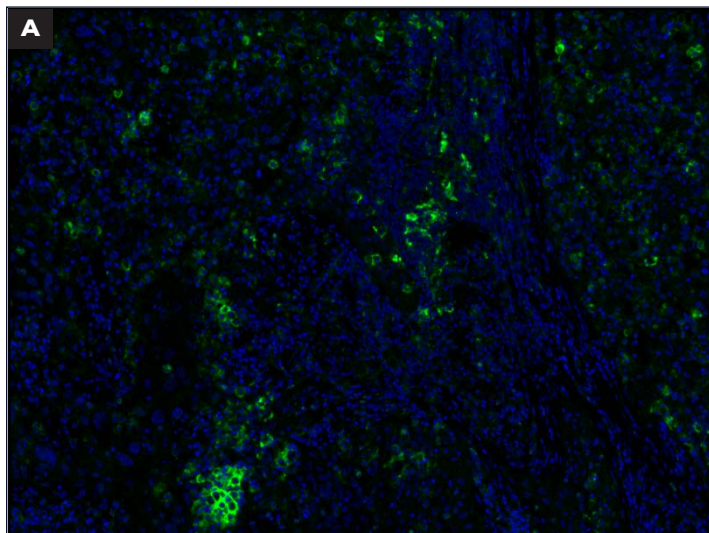
| PhenoCode Signature Workflow |                               |                      |
|------------------------------|-------------------------------|----------------------|
| Tissue Type                  | Sample Types Used for Testing | Recommended Dilution |
| Human FFPE                   | Lung Cancer, Tonsil           | 1:75 – 1:200         |

## Anti-Hu PD-L1 (AKYP0103)-BX067 for PhenoCode Signature

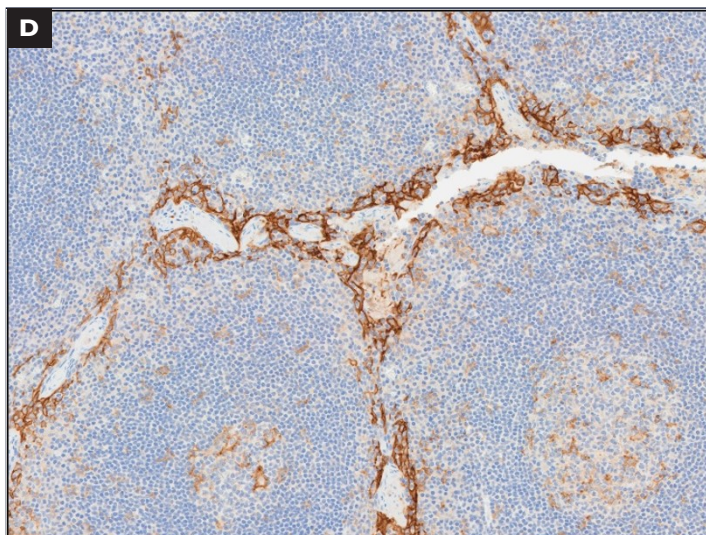
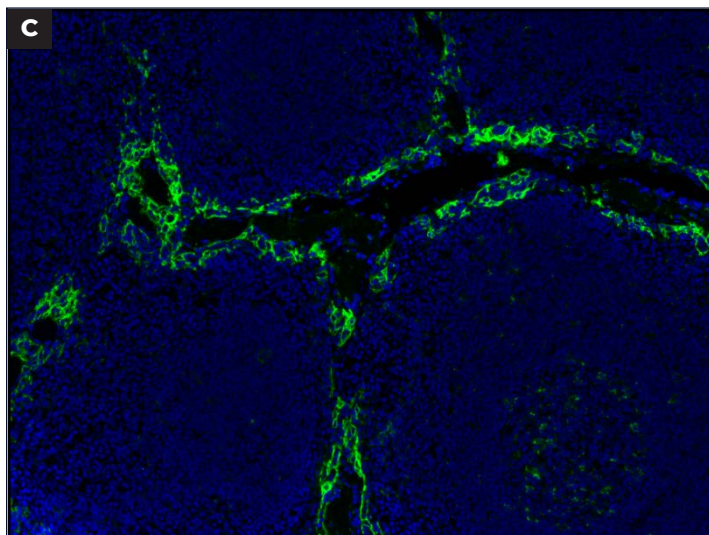
CATALOG # S6501011

PD-L1 is a membrane protein that is expressed on activated T cells, B cells, dendritic cells, keratinocytes, and monocytes. The following images compare the performance of anti-PD-L1 as a barcoded primary antibody and as an unconjugated primary antibody. Comparisons are provided in human FFPE lung cancer and human FFPE tonsil tissues.

### Human FFPE Lung Cancer



### Human FFPE Tonsil



**A.** Barcoded anti-PD-L1 paired with Opal 570 was used in the PhenoCode Signature Immuno-Contexture Human Protein Panel on lung cancer tissue. **B.** The image on the right shows human FFPE lung cancer tissue stained with DAB using unconjugated anti-PD-L1 antibody. Each assay was performed using the same tissue block; sections were chosen to be as close as possible. **C and D.** Identical assays were run on human tonsil tissue and images are displayed in the same manner as sections A and B.

To learn more visit [AKOYABIO.COM](https://www.akoyabio.com) or email us at [INFO@AKOYABIO.COM](mailto:INFO@AKOYABIO.COM)

For Research Use Only. Not for use in diagnostic procedures.

© 2023 Akoya Biosciences, Inc. All rights reserved. All trademarks are the property of Akoya Biosciences unless otherwise specified.

PD-000054 Rev B