

WHAT'S NEW IN VECTRA 3.0?



Vectra scans both brightfield and fluorescent slides; it can then take multispectral imagery of user-specified areas of interest, user-chosen TMA cores, or areas of interest determined automatically through the use of inForm Tissue Finder.

Versions 3.0.4 and higher support both Windows 7 and Windows 10.

Below we've highlighted the new features of Vectra 3.0

- New User Interface
- Dashboard
- Protocol Editor
- Scanning Slides
- Epi-Filter Wedge Correction, new in Vectra 3.0.5



Select 'Help' in the settings menu for complete system documentation

WHAT'S NEW IN VECTRA 3.0?

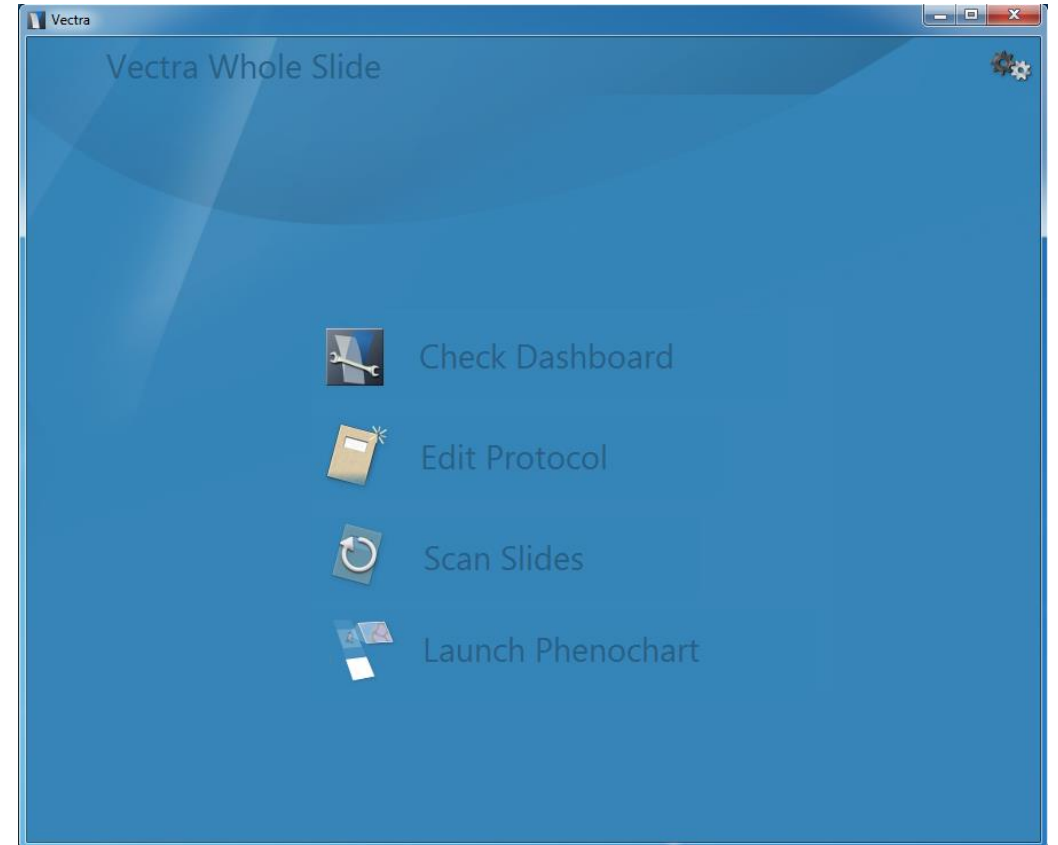


The Vectra 3.0 home screen is organized by task.

The dashboard provides the tools to confirm that your system is configured properly before scanning.

The protocol editor is a one-stop place for protocol creation and editing.

The slide scanning editor lets you easily set up your scans and walk away while Vectra works.



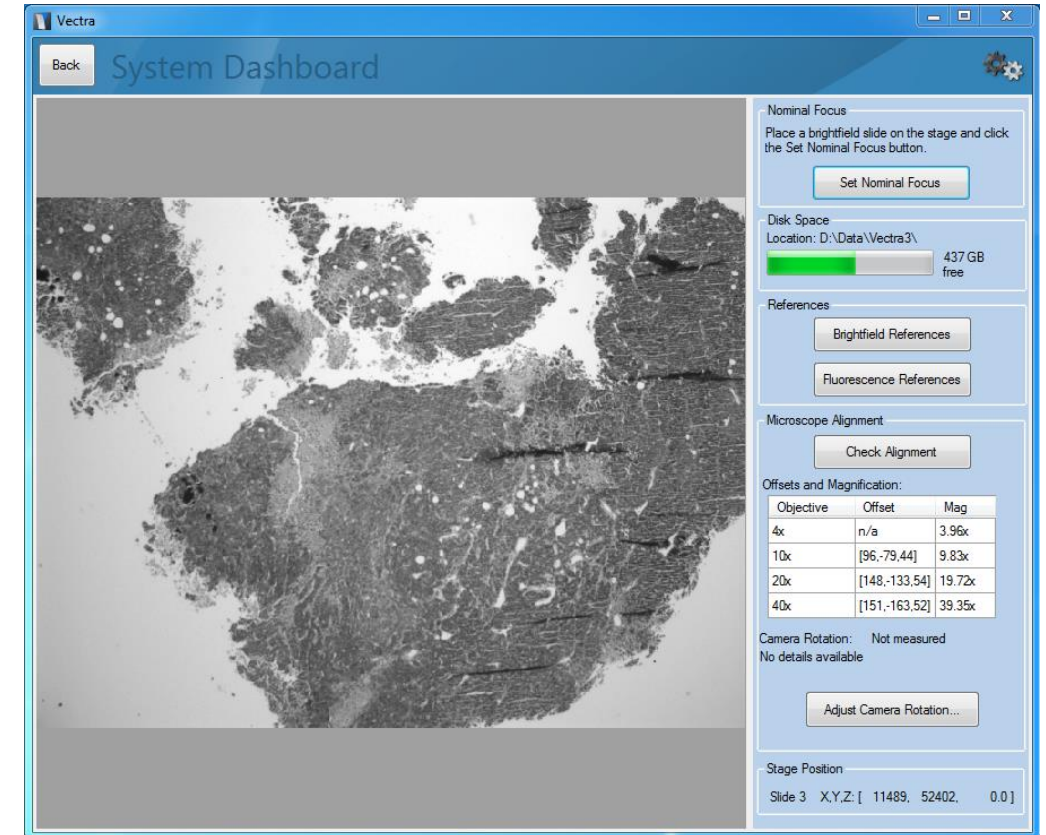
Select 'Help' in the settings menu for complete system documentation

WHAT'S NEW IN VECTRA 3.0?

Dashboard

The Vectra Dashboard provides tools to let you:

- See the available disk space
- Take brightfield and fluorescence references
- View your offsets and magnification
- Confirm your camera's alignment for optimal imagery



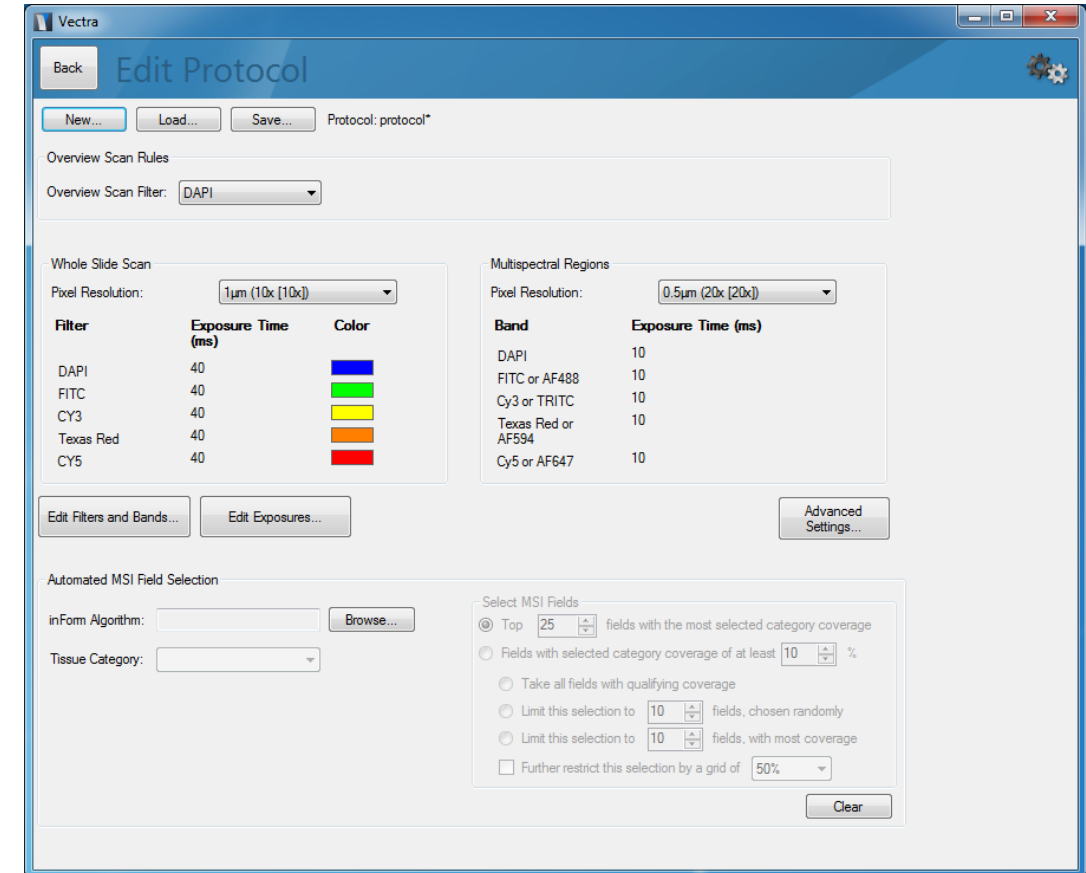
Select 'Help' in the settings menu for complete system documentation

WHAT'S NEW IN VECTRA 3.0?

Protocol Editor

Protocol editing in Vectra 3 is a simple process:

- Select your imaging resolutions
- Set your filters, bands and exposures in fluorescence
- Optionally use an inform algorithm to automatically select fields



Select 'Help' in the settings menu for complete system documentation

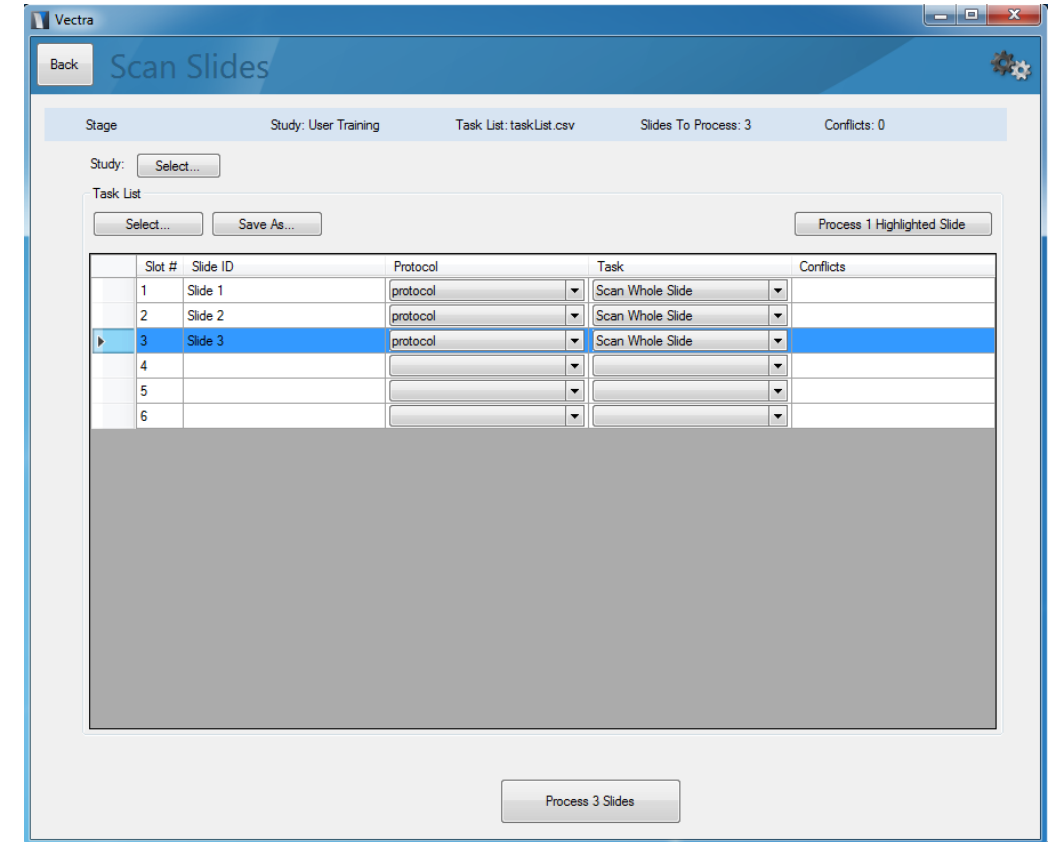
WHAT'S NEW IN VECTRA 3.0?

Scanning Slides

Create a tasklist to define your slide scanning rules. This can be done at the Vectra machine, or you can load one created at your desk.

Process the highlighted slides to confirm that everything is working while you're watching.

Process all slides to start a long-term scan.



Select 'Help' in the settings menu for complete system documentation

WHAT'S NEW IN VECTRA 3.0?

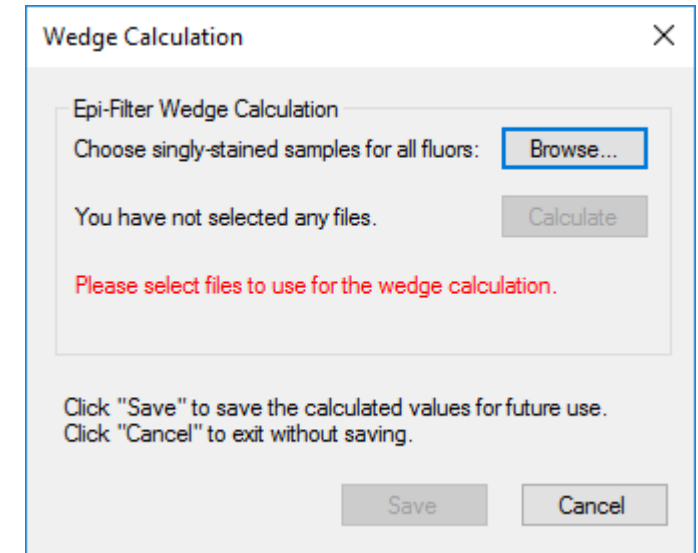


Epi-Filter Wedge Correction

Epi-filters can produce image shifts when filter wedge artifacts bend transmitted light. Even so-called “zero-pixel shift” filters can produce subpixel amounts of image shift that may impair quantification and spectral unmixing.

You can configure Vectra to compensate for wedge artifacts in multispectral imagery within the Epi-Filter section of the Hardware Setup Program. See Section 10 of the manual for more information.

You can also correct for wedge artifacts in previously acquired imagery using singly stained samples. See the appendix titled Epi-Filter Wedge Correction for more information.



Select 'Help' in the settings menu for complete system documentation